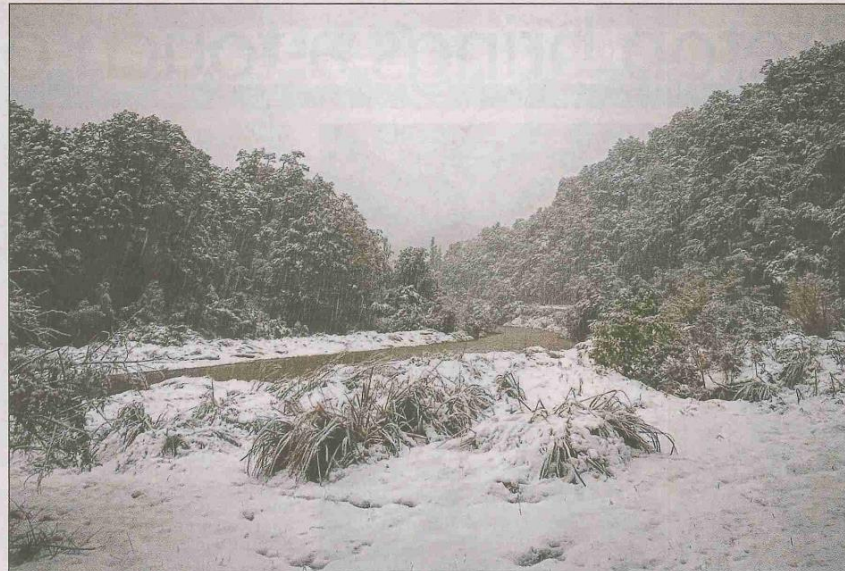


❑ Snow covered the roads around the Lake Waikaremoana area but didn't settle for long before the rain washed it away.



❑ Around 10 centimetres of snow covered the ground around Lake Waikaremoana during the weekend's extreme weather. Pictures by Petrina Brenchley

Clean-up continues in weather's wake

AFTER days of heavy rain and wind, the weather in Wairoa has finally settled down but some areas are still feeling winter's icy touch.

Snow fell in the Lake Waikaremoana area but didn't stick due to rain washing it away, however snow can still be seen in on the hill country.

The heavy rain began on Friday evening and carried on through to Sunday with a maximum rainfall of 81.9mm.

Intermittent showers of heavy rain have persisted over the town since the weekend's extreme weather.

Rainfall since Monday has totalled 20mm.

Wind was another cause of problems for the district, bringing trees down

across roads and powerlines.

Saturday saw wind gusts of around 66 kilometres an hour, but has settled since Monday with wind gusts recorded at around 37 kilometres an hour.

Power has been restored to most of the district but some rural areas of the region are still have to cope without mains power.

It was believed some of Tutira was still without power.

Some people are also still without a phone connection in the district.

Unison Networks relationship manager Danny Gough said the crews

were back out on site yesterday working in challenging conditions in some areas.

He said "we are continuing to bring people back on and, for those still without power, we are liaising with them

Unison Networks said its teams were working as hard as possible to get everyone back on power.

to understand what alternative supply they may already have.

"We are focussed on getting customers back with power and doing everything we can out there to make that happen," he said.

Unison Networks has advised customers

would be progressively restored as it worked through repairs on the ground and was hopeful more would be back on

after yesterday's efforts.

During the stormy weather around 20 power poles came down around the region caused by extensive vegetation issues and lots of wires were lying across the ground.

Mr Gough said this was the worst damage they had seen in 10 years.

New Zealand Transport Agency (NZTA) said State Highway 2 from Tutira to Wairoa was open but warned drivers of debris remaining from the weekend's storm and urged them to drive to the conditions and take extra care.

As weather and road conditions can change rapidly NZTA advise people to check the latest weather and road updates before they get on the road.